



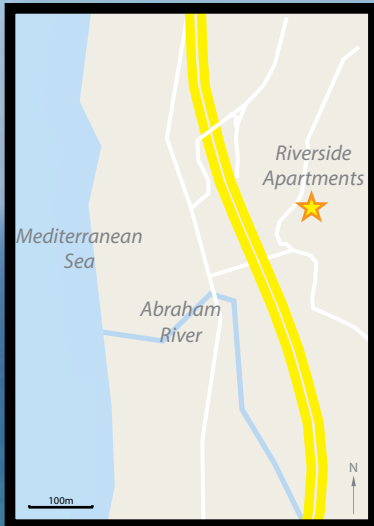
BYBLOS<sup>®</sup>  
HOMES  
.com

**Riverside**  
Luxury Apartments  
at Abraham River



**BYBLOS**<sup>®</sup>  
**HOMES**  
.com

Abraham River



34°04'01.7"N 35°38'45.1"E

(961) 3 606-253 Lebanon  
(949) 229-2587 US & Canada  
sales@bybloshomes.com  
bybloshomes.com/riverside

[www.bybloshomes.com/man/r](http://www.bybloshomes.com/man/r)

**Riverside Apartments by Byblos Homes**

All content, promotions, features, options, amenities, floor plans, elevations, designs, materials, dimensions, prices and availability are subject to change without notice. ©2017 Byblos Homes®. All Rights Reserved.



**BYBLOS  
HOMES**  
®  
.com

Welcome

Welcome to Byblos Homes, Lebanon's premier homebuilder.

For over 40 years, Byblos Homes has designed and built new homes with you in mind. Whether an apartment, townhome or single family house, each new home is built with a commitment to quality, comfort and affordability.

We stand behind every house we build, while implementing the Uniform Construction Standards (UCS); we strictly adhere to the highest standards, rigorous safety and material inspections. Furthermore, Byblos Homes is actively pursuing the ISO 9001 Quality Certification.

Striving to innovate and deliver superior homes, we continuously research the latest technologies, from home automation to energy efficient applications in your home, our pledge to a better living and green environment.

Committed to providing luxurious and affordable housing, with little down payment. We strictly enforce equal housing opportunity for all, forbidding any discrimination in the sale of housing, based on race, age, color, religion, sex, handicap, familial status, or national origin.

We take homebuilding seriously, mindful that a house is perhaps the biggest and most important investment you'll ever make. Every home is backed by the Byblos Homes Protection Plan: a first-in-the-nation 1-year limited warranty on all new homes.

Our goal is to Build you a Home, a Home for Life.™



DOMUS PRO VITA™

(961) 3 606-253 Lebanon  
(949) 229-2567 US & Canada  
sales@bybloshomes.com  
bybloshomes.com/riverside



[www.goo.gl/maps/kkdEQ](http://www.goo.gl/maps/kkdEQ)

Riverside Apartments by Byblos Homes

All content, promotions, features, options, amenities, floor plans, elevations, designs, materials, dimensions, prices and availability are subject to change without notice. ©2017 Byblos Homes®. All Rights Reserved.



**Riverside**  
Abraham River

---

- Units: 43 (3 Buildings)
- Sizes: 80 to 135 m<sup>2</sup>
- Bedrooms: 2 & 3 
- Bathrooms: 1 & 2 
- Parking: 1 per Unit 

**Property Details**

---

- Lot #: Abraham River #169
- Lot Size: 2800 m<sup>2</sup>
- Address: 163 20<sup>th</sup> Street  
Abraham River, Byblos 4407
- Map: [bybloshomes.com/map/r](http://bybloshomes.com/map/r)

**Timeline & Prices**

---

- Completion Date: August 2017
- Starting Price: \$99,995\*

\* Minimum down payment requirement for Regular price is 15%. Minimum down payment requirement for Blueprint price is 30%. Subject to availability, terms and conditions apply.



*Located on a hill, Riverside Apartments offers sea views, little traffic and convenience - 50 m from the freeway. Parking garage, gated entry and large balconies are just few of the amenities available.*

*With 11 floor plans to choose from, select the right size and budget to fit your needs. Sizes vary from 80 to 135 m<sup>2</sup> for 2 and 3 bedrooms, prices start at \$99,995, making your next home very affordable.*

*Call us now for more details at +961 3 606-253. You'll be happy to call Riverside your home.*





### Structure

- Reinforced concrete foundation with reinforced steel bar
- Outer walls: Double walled (25 cm) cinder block masonry
- Inner walls: Cinder block masonry

### Architecture

- Four story residential structure
- Three and four condominiums per floor
- Private community access and driveway
- Hilltop construction

### Doors and Windows

- Hi-grade, natural light design, aluminum double windows
- Premium European design doors
- Rolling shutters (monoblock)

### Interior and Flooring

- Triple coated painted walls
- Premium ceramic throughout family room, dining and living rooms
- Hi-grade ceramic throughout entrance and bedrooms

### Electrical and Heating

- Built-in two-phase Air Conditioning & Heating units
- Solar powered Hot-water tanks
- Electric circuitry by legrand®
- Hi-rated wiring by Liban Cables™

### Bathrooms

- Premium faucets and fixtures
- Grade I lavatory and bathtub
- Pressure tested PVC plumbing pipes
- Ceramic tiled floors and walls



### Kitchen

- Optimum granite countertops with deluxe faucets and fixtures
- Deluxe aluminum kitchen cabinets
- Stainless steel sink
- Hookups for refrigerator, dishwasher, stove and washing machines

### Access

- Video intercom with access control system
- Gated underground parking garage
- Multi-passenger elevator

### Warranty

- **30-Day Money-Back Guarantee**
- Byblos Homes Protection Plan: 1-year limited warranty on your new home





**BYBLOS**<sup>®</sup>  
**HOMES**  
.com

**Block A**  
**View from South West**



(961) 3 606-253 Lebanon  
(949) 229-2587 US & Canada  
sales@bybloshomes.com  
bybloshomes.com/riverside

**Riverside Apartments by Byblos Homes**

All content, promotions, features, options, amenities, floor plans, elevations, designs, materials, dimensions, prices and availability are subject to change without notice. ©2017 Byblos Homes®. All Rights Reserved.



**Riverside**

Block A

Reference #ARRAR04

**Size:** 80 m<sup>2</sup>

- Bedrooms: 2
- Bathrooms: 1
- Parking: 1 per Unit
- Floors: 4
- Type: Deluxe Condominiums
- View: Sea / Mountain
- Yard: Select Apartments

**Availability & Prices**

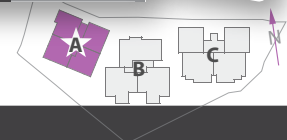
- Available Units: 16
- Completion Date: August 2018
- Starting Price: \$99,995\*

\* Minimum down payment requirement for Regular price is 15%. Minimum down payment requirement for Blueprint price is 30%. Subject to availability; terms and conditions apply.

BLOCK A



from  
**\$99,995**



Available Option

- Merge 2 or more units into larger apartment or duplex





**PLAN A1**

**Riverside**

Block A - Plan 1

Reference #ARRA1R11

**Size:** 80 m<sup>2</sup>

- Bedrooms: 2 • Bathrooms: 1
- Living Rooms: 1 • Parking: 1
- Balconies: 1

**Features**

- Sea / Mountain View
- Double Walls
- Double Windows
- A/C included
- Kitchen Cabinets
- Elevator
- Gated Entrance
- Attic Space
- Stone Siding
- Electric by legrand®
- Monoblocks
- Solar Hot Water
- Granite Countertop
- Video Intercom
- Designated Parking
- 1-Year Warranty

**Availability & Prices**

- Total Units: 4
- Completion Date: August 2018

Unit	Floor	Yard	Regular	Blueprint
A1-1	1 <sup>st</sup>	+25 m <sup>2</sup>	\$105,995	<del>\$99,995</del> <b>SOLD</b>
A1-2	2 <sup>nd</sup>		\$115,995	\$108,995
A1-3	3 <sup>rd</sup>		\$117,995	<del>\$110,995</del> <b>SOLD</b>
A1-4	4 <sup>th</sup>		\$122,995	<del>\$115,995</del> <b>SOLD</b>

\* Minimum down payment requirement for Regular price is 15%. Minimum down payment requirement for Blueprint price is 30%. Subject to availability; terms and conditions apply.

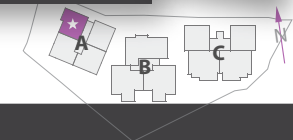


Available Options



- Storage Unit..... \$2,995
- Central Heating Hookups.... \$1,595
- Premium Luxury Package... \$7,595
- Home Automation..... \$1,395
- UPS Home System..... \$1,195
- CBC Customization Fee..... \$2,000

from **\$99,995**





**Riverside**

Block A - Plan 2

Reference #ARRA2R09

**Size:** 80 m<sup>2</sup>

- Bedrooms: 2 • Bathrooms: 1
- Living Rooms: 1 • Parking: 1
- Balconies: 1

**Features**

- Sea / Mountain View
- Double Walls
- Double Windows
- A/C included
- Kitchen Cabinets
- Elevator
- Gated Entrance
- Attic Space
- Stone Siding
- Electric by legrand®
- Monoblocks
- Solar Hot Water
- Granite Countertop
- Video Intercom
- Designated Parking
- 1-Year Warranty

**Availability & Prices**

- Total Units: 4
- Completion Date: August 2018

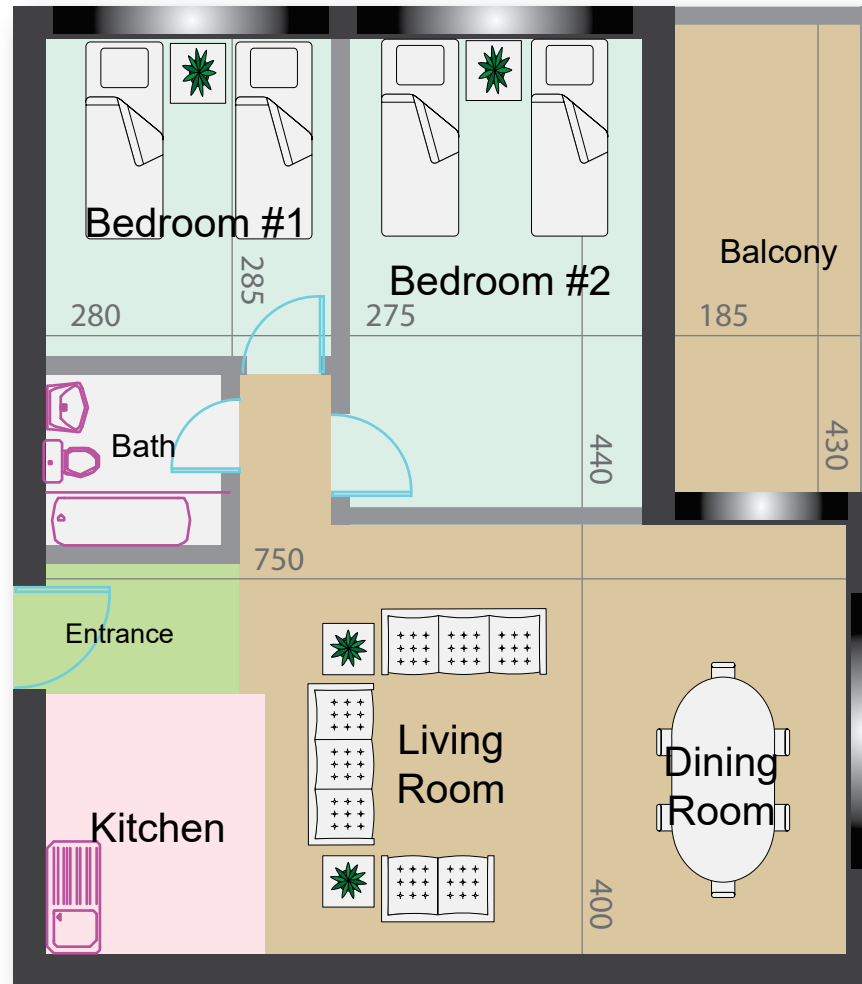
Unit	Floor	Yard	Regular	Blueprint
A2-1	1 <sup>st</sup>	+25 m <sup>2</sup>	\$105,995	<del>\$99,995</del> <b>SOLD</b>
A2-2	2 <sup>nd</sup>		\$108,995	<del>\$102,995</del> <b>SOLD</b>
A2-3	3 <sup>rd</sup>		\$110,995	\$104,995
A2-4	4 <sup>th</sup>		\$110,995	<del>\$104,995</del> <b>SOLD</b>

\* Minimum down payment requirement for Regular price is 15%. Minimum down payment requirement for Blueprint price is 30%. Subject to availability, terms and conditions apply.

(961) 3 606-253 Lebanon  
(949) 229-2567 US & Canada  
sales@bybloshomes.com  
bybloshomes.com/riverside



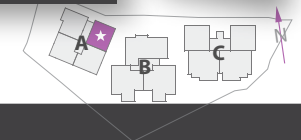
PLAN A2



from  
**\$99,995**

**Available Options**

- Storage Unit..... \$2,995
- Home Automation..... \$1,395
- Central Heating Hookups.... \$1,595
- UPS Home System..... \$1,195
- Premium Luxury Package... \$7,595
- CBC Customization Fee..... \$2,000



[www.goo.gl/maps/kkdEQ](http://www.goo.gl/maps/kkdEQ)

**Riverside Apartments by Byblos Homes**

All content, promotions, features, options, amenities, floor plans, elevations, designs, materials, dimensions, prices and availability are subject to change without notice. ©2017 Byblos Homes®. All Rights Reserved.



**Riverside**

Block A - Plan 3

Reference #ARRA3R08

**Size:** 80 m<sup>2</sup>

- Bedrooms: 2 • Bathrooms: 1
- Living Rooms: 1 • Parking: 1
- Balconies: 1

**Features**

- Sea / Mountain View
- Double Walls
- Double Windows
- A/C included
- Kitchen Cabinets
- Elevator
- Gated Entrance
- Attic Space
- Stone Siding
- Electric by legrand®
- Monoblocks
- Solar Hot Water
- Granite Countertop
- Video Intercom
- Designated Parking
- 1-Year Warranty

**Availability & Prices**

- Total Units: 4
- Completion Date: August 2018

Unit	Floor	Yard	Regular	Blueprint
A3-1	1 <sup>st</sup>	+25 m <sup>2</sup>	\$115,995	\$108,995
A3-2	2 <sup>nd</sup>		\$114,995	\$107,995
A3-3	3 <sup>rd</sup>		\$117,995	\$110,995
A3-4	4 <sup>th</sup>		\$120,995	\$113,995

A3-1	1 <sup>st</sup>	+25 m <sup>2</sup>	\$115,995	\$108,995	<b>SOLD</b>
A3-2	2 <sup>nd</sup>		\$114,995	\$107,995	<b>SOLD</b>
A3-3	3 <sup>rd</sup>		\$117,995	\$110,995	<b>SOLD</b>
A3-4	4 <sup>th</sup>		\$120,995	\$113,995	<b>SOLD</b>

\* Minimum down payment requirement for Regular price is 15%. Minimum down payment requirement for Blueprint price is 30%. Subject to availability; terms and conditions apply.

(961) 3 606-253 Lebanon  
 (949) 229-2567 US & Canada  
 sales@bybloshomes.com  
 bybloshomes.com/riverside

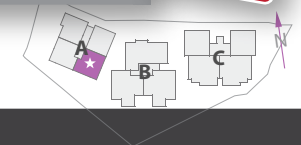


PLAN A3



**Available Options**

- Storage Unit..... \$2,995
- Central Heating Hookups.... \$1,595
- Premium Luxury Package... \$7,595
- Home Automation..... \$1,395
- UPS Home System..... \$1,195
- CBC Customization Fee..... \$2,000



[www.goo.gl/maps/kkdEQ](http://www.goo.gl/maps/kkdEQ)

**Riverside Apartments by Byblos Homes**

All content, promotions, features, options, amenities, floor plans, elevations, designs, materials, dimensions, prices and availability are subject to change without notice. ©2017 Byblos Homes®. All Rights Reserved.



**PLAN A4**

**Riverside**

Block A - Plan 4

Reference #ARRA4R12

**Size:** 80 m<sup>2</sup>

- Bedrooms: 2 • Bathrooms: 1
- Living Rooms: 1 • Parking: 1
- Balconies: 1

**Features**

- Sea / Mountain View
- Double Walls
- Double Windows
- A/C included
- Kitchen Cabinets
- Elevator
- Gated Entrance
- Attic Space
- Stone Siding
- Electric by legrand®
- Monoblocks
- Solar Hot Water
- Granite Countertop
- Video Intercom
- Designated Parking
- 1-Year Warranty

**Availability & Prices**

- Total Units: 4
- Completion Date: August 2018

Unit	Floor	Yard	Regular	Blueprint
A4-1	1 <sup>st</sup>	125 m <sup>2</sup>	\$108,995	<del>\$102,995</del> <b>SOLD</b>
A4-2	2 <sup>nd</sup>		\$114,995	<del>\$107,995</del> <b>SOLD</b>
A4-3	3 <sup>rd</sup>		\$118,995	<del>\$111,995</del> <b>SOLD</b>
A4-4	4 <sup>th</sup>		\$125,995	<del>\$118,995</del> <b>SOLD</b>

\* Minimum down payment requirement for Regular price is 15%. Minimum down payment requirement for Blueprint price is 30%. Subject to availability, terms and conditions apply.

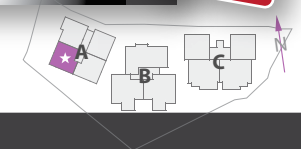
(961) 3 606-253 Lebanon  
(949) 229-2567 US & Canada  
sales@bybloshomes.com  
bybloshomes.com/riverside



**Available Options**

- Storage Unit..... \$2,995
- Home Automation..... \$1,395
- Central Heating Hookups... \$1,595
- UPS Home System..... \$1,195
- Premium Luxury Package... \$7,595
- CBC Customization Fee..... \$2,000

from **\$102,995**



[www.goo.gl/maps/kkdEQ](http://www.goo.gl/maps/kkdEQ)

**Riverside Apartments by Byblos Homes**

All content, promotions, features, options, amenities, floor plans, elevations, designs, materials, dimensions, prices and availability are subject to change without notice. ©2017 Byblos Homes®. All Rights Reserved.



**BYBLOS<sup>®</sup>  
HOMES**  
.com

**Block B  
View from South**



(961) 3 606-253 Lebanon  
(949) 229-2587 US & Canada  
sales@bybloshomes.com  
bybloshomes.com/riverside

**Riverside Apartments by Byblos Homes**

All content, promotions, features, options, amenities, floor plans, elevations, designs, materials, dimensions, prices and availability are subject to change without notice. ©2017 Byblos Homes®. All Rights Reserved.



**Riverside**

Block B

Reference #ARRBR05

**Size:** 125 - 135 m<sup>2</sup>

- Bedrooms: 3
- Bathrooms: 2
- Parking: 1 per Unit
- Floors: 4
- Type: Deluxe Condominiums
- View: Sea / Mountain
- Yard: Select Apartments

**Availability & Prices**

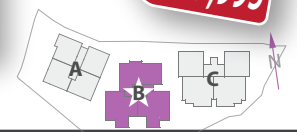
- Available Units: 12
- Completion Date: August 2017
- Starting Price: \$159,995\*

\* Minimum down payment requirement for Regular price is 15%. Minimum down payment requirement for Blueprint price is 30%. Subject to availability; terms and conditions apply.

BLOCK B



from  
**\$159,995**



Available Option

- Merge 2 or more units into larger apartment or duplex





BYBLOS<sup>®</sup>  
HOMES  
.com



(961) 3 606-253 Lebanon  
(949) 229-2567 US & Canada  
sales@bybloshomes.com  
bybloshomes.com/riverside

**All Blocks  
View from South**



**Riverside Apartments by Byblos Homes**

All content, promotions, features, options, amenities, floor plans, elevations, designs, materials, dimensions, prices and availability are subject to change without notice. ©2017 Byblos Homes®. All Rights Reserved.



**Riverside**

Block B - Plan 1

Reference #ARRB1R13

**Size: 135 m<sup>2</sup>**

- Bedrooms: 3
- Bathrooms: 2
- Living Rooms: 1
- Parking: 1
- Balconies: 2

**Features**

- Sea / Mountain View
- Double Walls
- Double Windows
- A/C included
- Kitchen Cabinets
- Elevator
- Gated Entrance
- Attic Space
- Stone Siding
- Electric by legrand®
- Monoblocks
- Solar Hot Water
- Granite Countertop
- Video Intercom
- Designated Parking
- 1-Year Warranty

**Availability & Prices**

- Total Units: 4
- Completion Date: August 2017

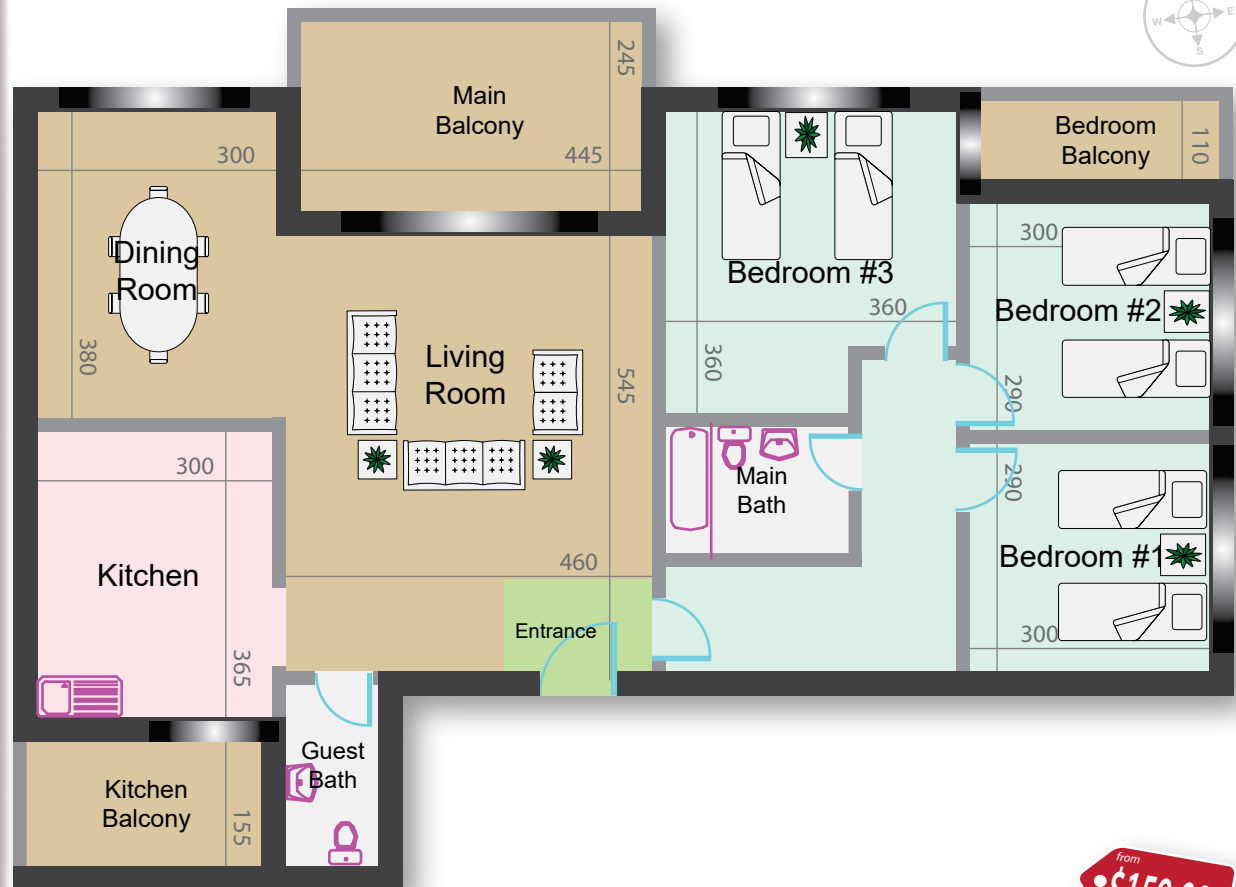
Unit	Floor	Yard	Regular	Blueprint
B1-1	1 <sup>st</sup>	1100 m <sup>2</sup>	\$174,995	<del>\$165,995</del> <b>SOLD</b>
B1-2	2 <sup>nd</sup>		\$168,995	<del>\$159,995</del> <b>SOLD</b>
B1-3	3 <sup>rd</sup>		\$174,995	\$165,995
B1-4	4 <sup>th</sup>		\$174,995	<del>\$165,995</del> <b>SOLD</b>

\* Minimum down payment requirement for Regular price is 15%. Minimum down payment requirement for Blueprint price is 30%. Subject to availability; terms and conditions apply.

(961) 3 606-253 Lebanon  
(949) 229-2567 US & Canada  
sales@bybloshomes.com  
bybloshomes.com/riverside



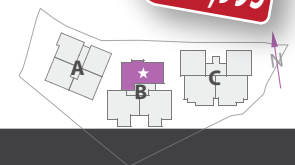
**PLAN B1**



**Available Options**

- Add a Bathroom.....\$2,995
- Home Automation.....\$1,395
- Central Heating Hookups.... \$1,895
- UPS Home System..... \$1,195
- Premium Luxury Package... \$9,995
- CBC Customization Fee..... \$2,000

from **\$159,995**



[www.goo.gl/maps/kkdEQ](http://www.goo.gl/maps/kkdEQ)

**Riverside Apartments by Byblos Homes**

All content, promotions, features, options, amenities, floor plans, elevations, designs, materials, dimensions, prices and availability are subject to change without notice. ©2017 Byblos Homes®. All Rights Reserved.



**Riverside**

Block B - Plan 2

Reference #ARRB2R12

**Size:** 125 - 135 m<sup>2</sup>

- Bedrooms: 3 • Bathrooms: 2
- Living Rooms: 1 • Parking: 1
- Balconies: 2

**Features**

- Sea / Mountain View
- Double Walls
- Double Windows
- A/C included
- Kitchen Cabinets
- Elevator
- Gated Entrance
- Attic Space
- Stone Siding
- Electric by legrand®
- Monoblocks
- Solar Hot Water
- Granite Countertop
- Video Intercom
- Designated Parking
- 1-Year Warranty

**Availability & Prices**

- Total Units: 4
- Completion Date: August 2017

Unit	Floor	Size	Regular	Blueprint
------	-------	------	---------	-----------

B2-1	1 <sup>st</sup>	125+70	\$179,995	<b>\$169,995</b>
B2-2	2 <sup>nd</sup>	135	\$189,995	<del>\$179,995</del> <b>SOLD</b>
B2-3	3 <sup>rd</sup>	135	\$197,995	\$187,995
B2-4	4 <sup>th</sup>	135	\$205,995	<del>\$195,995</del> <b>SOLD</b>

\* Minimum down payment requirement for Regular price is 15%. Minimum down payment requirement for Blueprint price is 30%. Subject to availability; terms and conditions apply.

(961) 3 606-253 Lebanon  
 (949) 229-2567 US & Canada  
 sales@bybloshomes.com  
 bybloshomes.com/riverside



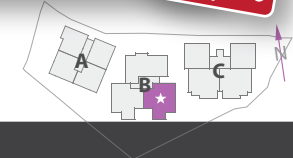
PLAN B2



Available Options

- Add a Bathroom.....\$2,995
- Home Automation.....\$1,395
- Central Heating Hookups.... \$1,895
- UPS Home System..... \$1,195
- Premium Luxury Package... \$9,995
- CBC Customization Fee..... \$2,000

from **\$179,995**



[www.goo.gl/maps/kkdEQ](http://www.goo.gl/maps/kkdEQ)

Riverside Apartments by Byblos Homes

All content, promotions, features, options, amenities, floor plans, elevations, designs, materials, dimensions, prices and availability are subject to change without notice. ©2017 Byblos Homes®. All Rights Reserved.



**Riverside**

Block B - Plan 3

Reference #ARRB3R08

**Size:** 135 m<sup>2</sup>

- Bedrooms: 3 • Bathrooms: 2
- Living Rooms: 1 • Parking: 1
- Balconies: 2

**Features**

- Sea / Mountain View
- Double Walls
- Double Windows
- A/C included
- Kitchen Cabinets
- Elevator
- Gated Entrance
- Attic Space
- Stone Siding
- Electric by legrand®
- Monoblocks
- Solar Hot Water
- Granite Countertop
- Video Intercom
- Designated Parking
- 1-Year Warranty

**Availability & Prices**

- Total Units: 4
- Completion Date: August 2017

Unit	Floor	Yard	Regular	Blueprint
B3-1	1 <sup>st</sup>	+70 m <sup>2</sup>	\$195,995	\$185,995
B3-2	2 <sup>nd</sup>		\$189,995	<del>\$179,995</del> <b>SOLD</b>
B3-3	3 <sup>rd</sup>		\$197,995	<del>\$187,995</del> <b>SOLD</b>
B3-4	4 <sup>th</sup>		\$205,995	<del>\$195,995</del> <b>SOLD</b>

\* Minimum down payment requirement for Regular price is 15%. Minimum down payment requirement for Blueprint price is 30%. Subject to availability; terms and conditions apply.

(961) 3 606-253 Lebanon  
 (949) 229-2567 US & Canada  
 sales@bybloshomes.com  
 bybloshomes.com/riverside



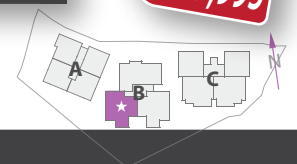
PLAN B3



from **\$179,995**

**Available Options**

- Add a Bathroom.....\$2,995
- Home Automation.....\$1,395
- Central Heating Hookups.... \$1,895
- UPS Home System..... \$1,195
- Premium Luxury Package... \$9,995
- CBC Customization Fee..... \$2,000



Riverside Apartments by Byblos Homes

All content, promotions, features, options, amenities, floor plans, elevations, designs, materials, dimensions, prices and availability are subject to change without notice. ©2017 Byblos Homes®. All Rights Reserved.



**BYBLOS<sup>®</sup>**  
**HOMES**  
.com

**Block C**  
**View from South East**



(961) 3 606-253 Lebanon  
(949) 229-2587 US & Canada  
sales@bybloshomes.com  
bybloshomes.com/riverside

**Riverside Apartments by Byblos Homes**

All content, promotions, features, options, amenities, floor plans, elevations, designs, materials, dimensions, prices and availability are subject to change without notice. ©2017 Byblos Homes®. All Rights Reserved.



**Riverside**

Block C

Reference #ARRCR03

**Size:** 90 - 115 m<sup>2</sup>

- Bedrooms: 2
- Bathrooms: 1 - 2
- Parking: 1 per Unit
- Floors: 4
- Type: Deluxe Condominiums
- View: Sea / Mountain
- Yard: Select Apartments

**Availability & Prices**

- Available Units: 16
- Completion Date: August 2017
- Starting Price: \$116,995\*

\* Minimum down payment requirement for Regular price is 15%. Minimum down payment requirement for Blueprint price is 30%. Subject to availability, terms and conditions apply.

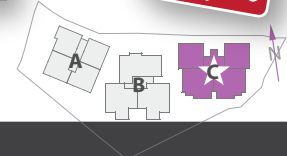
(961) 3 606-253 Lebanon  
(949) 229-2567 US & Canada  
sales@bybloshomes.com  
bybloshomes.com/riverside



BLOCK C



from **\$116,995**



Available Option

- Merge 2 or more units into larger apartment or duplex

[www.goo.gl/maps/kkdEQ](http://www.goo.gl/maps/kkdEQ)

**Riverside Apartments by Byblos Homes**



**Riverside**

Block C - Plan 1

Reference #ARRC1R08

**Size:** 90 m<sup>2</sup>

- Bedrooms: 2 • Bathrooms: 1
- Living Rooms: 1 • Parking: 1
- Balconies: 1

**Features**

- Sea / Mountain View
- Double Walls
- Double Windows
- A/C included
- Kitchen Cabinets
- Elevator
- Gated Entrance
- Attic Space
- Stone Siding
- Electric by legrand®
- Monoblocks
- Solar Hot Water
- Granite Countertop
- Video Intercom
- Designated Parking
- 1-Year Warranty

**Availability & Prices**

- Total Units: 4
- Completion Date: August 2017

Unit	Floor	Yard	Regular	Blueprint
C1-1	1 <sup>st</sup>	+30 m <sup>2</sup>	\$123,995	<del>\$116,995</del> <b>SOLD</b>
C1-2	2 <sup>nd</sup>		\$123,995	\$116,995
C1-3	3 <sup>rd</sup>		\$126,995	\$119,995
C1-4	4 <sup>th</sup>		\$126,995	\$119,995

\* Minimum down payment requirement for Regular price is 15%. Minimum down payment requirement for Blueprint price is 30%. Subject to availability, terms and conditions apply.

(961) 3 606-253 Lebanon  
(949) 229-2567 US & Canada  
sales@bybloshomes.com  
bybloshomes.com/riverside



PLAN C1

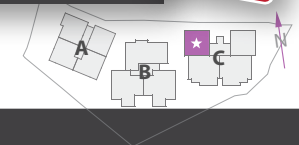


from **\$116,995**

*Available Options*



- Storage Unit..... \$2,995
- Central Heating Hookups.... \$1,595
- Premium Luxury Package... \$8,595
- Home Automation..... \$1,395
- UPS Home System..... \$1,195
- CBC Customization Fee..... \$2,000



[www.goo.gl/maps/kkdEQ](http://www.goo.gl/maps/kkdEQ)

**Riverside Apartments by Byblos Homes**

All content, promotions, features, options, amenities, floor plans, elevations, designs, materials, dimensions, prices and availability are subject to change without notice. ©2017 Byblos Homes®. All Rights Reserved.



### Riverside

Block C - Plan 2

Reference #ARRC2R10

**Size:** 90 m<sup>2</sup>

- Bedrooms: 2 • Bathrooms: 1
- Living Rooms: 1 • Parking: 1
- Balconies: 1

#### Features

- Sea / Mountain View
- Double Walls
- Double Windows
- A/C included
- Kitchen Cabinets
- Elevator
- Gated Entrance
- Attic Space
- Stone Siding
- Electric by legrand®
- Monoblocks
- Solar Hot Water
- Granite Countertop
- Video Intercom
- Designated Parking
- 1-Year Warranty

#### Availability & Prices

- Total Units: 4
- Completion Date: August 2017

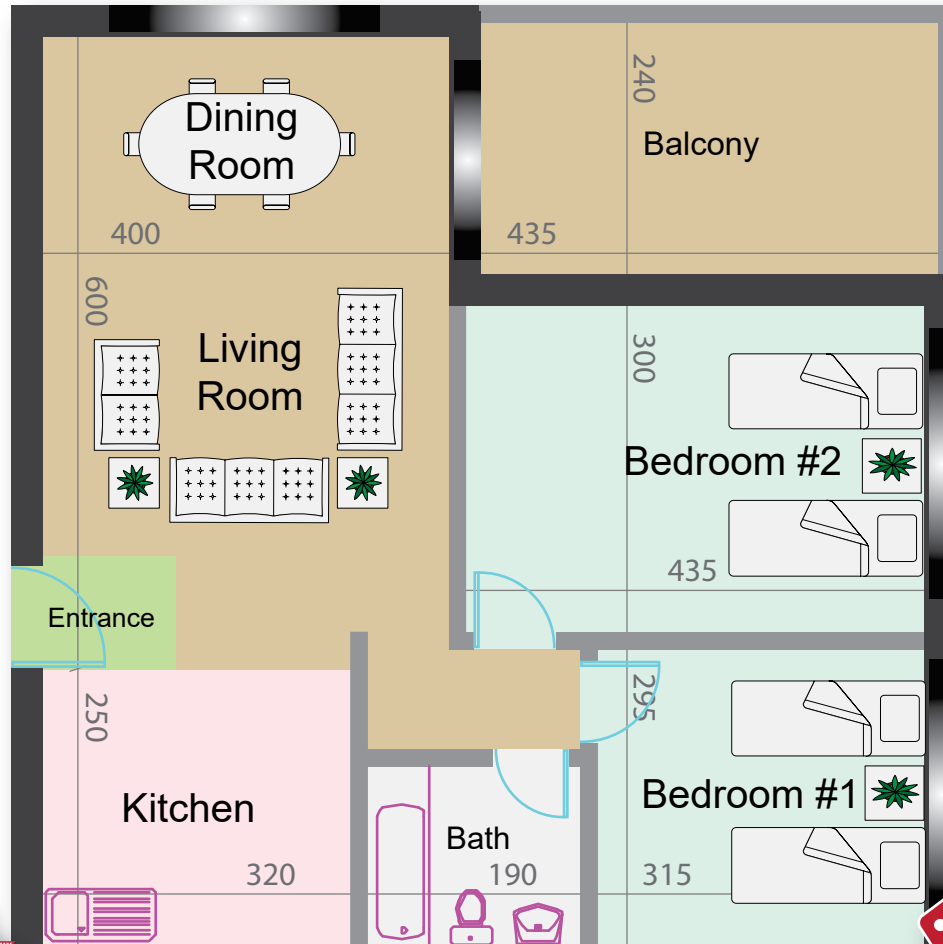
Unit	Floor	Yard	Regular	Blueprint
C2-1	1 <sup>st</sup>	120 m <sup>2</sup>	\$135,995	\$128,995 <b>SOLD</b>
C2-2	2 <sup>nd</sup>		\$129,995	\$122,995 <b>SOLD</b>
C2-3	3 <sup>rd</sup>		\$133,995	\$126,995
C2-4	4 <sup>th</sup>		\$133,995	\$126,995

\* Minimum down payment requirement for Regular price is 15%. Minimum down payment requirement for Blueprint price is 30%. Subject to availability; terms and conditions apply.

(961) 3 606-253 Lebanon  
 (949) 229-2567 US & Canada  
 sales@bybloshomes.com  
 bybloshomes.com/riverside



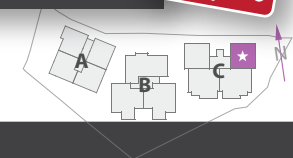
PLAN C2



from **\$122,995**

#### Available Options

- Storage Unit..... \$2,995
- Home Automation..... \$1,395
- Central Heating Hookups.... \$1,595
- UPS Home System..... \$1,195
- Premium Luxury Package... \$8,595
- CBC Customization Fee..... \$2,000



[www.goo.gl/maps/kkdEQ](http://www.goo.gl/maps/kkdEQ)

Riverside Apartments by Byblos Homes

All content, promotions, features, options, amenities, floor plans, elevations, designs, materials, dimensions, prices and availability are subject to change without notice. ©2017 Byblos Homes®. All Rights Reserved.



**PLAN C3**

**Riverside**

Block C - Plan 3

Reference #ARRC3R10

**Size: 115 m<sup>2</sup>**

- Bedrooms: 2 • Bathrooms: 2
- Living Rooms: 1 • Parking: 1
- Balconies: 2

**Features**

- Sea / Mountain View
- Double Walls
- Double Windows
- A/C included
- Kitchen Cabinets
- Elevator
- Gated Entrance
- Attic Space
- Stone Siding
- Electric by legrand®
- Monoblocks
- Solar Hot Water
- Granite Countertop
- Video Intercom
- Designated Parking
- 1-Year Warranty

**Availability & Prices**

- Total Units: 4
- Completion Date: August 2017

Unit	Floor	Yard	Regular	Blueprint
C3-1	1 <sup>st</sup>	+120 m <sup>2</sup>	\$169,995	\$160,995 <b>SOLD</b>
C3-2	2 <sup>nd</sup>		\$164,995	<b>\$155,995</b>
C3-3	3 <sup>rd</sup>		\$168,995	\$159,995
C3-4	4 <sup>th</sup>		\$168,995	\$159,995

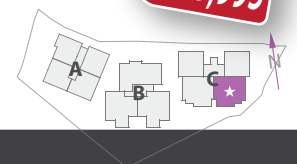
\* Minimum down payment requirement for Regular price is 15%. Minimum down payment requirement for Blueprint price is 30%. Subject to availability; terms and conditions apply.



Available Options

- Storage Unit..... \$2,995
- Home Automation..... \$1,395
- Central Heating Hookups.... \$1,595
- UPS Home System..... \$1,195
- Premium Luxury Package... \$8,595
- CBC Customization Fee..... \$2,000

from **\$155,995**



(961) 3 606-253 Lebanon  
 (949) 229-2567 US & Canada  
 sales@bybloshomes.com  
 bybloshomes.com/riverside



[www.goo.gl/maps/kkdEQ](http://www.goo.gl/maps/kkdEQ)

**Riverside Apartments by Byblos Homes**

All content, promotions, features, options, amenities, floor plans, elevations, designs, materials, dimensions, prices and availability are subject to change without notice. ©2017 Byblos Homes®. All Rights Reserved.



### Riverside

Block C - Plan 4

Reference #ARRC4R11

**Size:** 115 m<sup>2</sup>

- Bedrooms: 2 • Bathrooms: 2
- Living Rooms: 1 • Parking: 1
- Balconies: 2

#### Features

- Sea / Mountain View
- Double Walls
- Double Windows
- A/C included
- Kitchen Cabinets
- Elevator
- Gated Entrance
- Attic Space
- Stone Siding
- Electric by legrand®
- Monoblocks
- Solar Hot Water
- Granite Countertop
- Video Intercom
- Designated Parking
- 1-Year Warranty

#### Availability & Prices

- Total Units: 4
- Completion Date: August 2017

Unit	Floor	Yard	Regular	Blueprint
C4-1	1 <sup>st</sup>	125 m <sup>2</sup>	\$168,995	\$159,995 <b>SOLD</b>
C4-2	2 <sup>nd</sup>		\$157,995	\$149,995 <b>SOLD</b>
C4-3	3 <sup>rd</sup>		\$164,995	\$155,995
C4-4	4 <sup>th</sup>		\$164,995	\$155,995

\* Minimum down payment requirement for Regular price is 15%. Minimum down payment requirement for Blueprint price is 30%. Subject to availability; terms and conditions apply.

PLAN C4

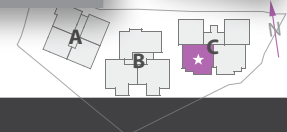


Available Options



- Storage Unit..... \$2,995
- Central Heating Hookups.... \$1,595
- Premium Luxury Package... \$8,595
- Home Automation..... \$1,395
- UPS Home System..... \$1,195
- CBC Customization Fee..... \$2,000

from **\$149,995**



(961) 3 606-253 Lebanon  
 (949) 229-2567 US & Canada  
 sales@bybloshomes.com  
 bybloshomes.com/riverside



[www.goo.gl/maps/kkdEQ](http://www.goo.gl/maps/kkdEQ)

Riverside Apartments by Byblos Homes

All content, promotions, features, options, amenities, floor plans, elevations, designs, materials, dimensions, prices and availability are subject to change without notice. ©2017 Byblos Homes®. All Rights Reserved.



Located 25 km north of Beirut, Abraham River offers natural beauty with its river and sea landscape, great views and a laid-back lifestyle. The region offers unique cultural, sports and artistic attractions. Abraham River features a neighborly atmosphere while minutes from the ancient ruins of Byblos, with plenty of historic cobblestone streets and monuments to explore. Numerous beaches and shops provide diverse recreation for the whole family.



### Shopping

Byblos and Jounieh offer a variety of shopping areas ranging from local shops to major supermarkets. The revitalized Byblos and Jounieh districts in the main squares feature lively restaurants and shops - in pedestrian-friendly, traditional "souks".



### Medical

Exceptional medical facilities in the area include renowned full-service hospital Our Lady of Relief in Byblos, and AUB Medical Center in Ghazir (Jounieh). Also, numerous health clinics, general practitioners and specialized physicians have established medical offices throughout the area.



### Culture and History

Home to the Byblos International Festival, the world's most continuously inhabited area has ancient monuments and ruins reflecting over 7000 years of human history. Listed on UNESCO's world heritage site, Byblos is enriched in history with Phoenician ruins, castles from the medieval times, the world's oldest port, cobblestone market square and churches from times of the Crusades.



### Recreation

Enjoy some of the nation's greatest beaches. Picturesque views, crystal clear water and isolated cliffs. Minutes from world renowned Edde Sands beach resort as well as many secluded sea access points. Enjoy the Mediterranean sea, go for a swim or snorkel, explore the underwater caves where fresh water aquifers pierce the sea floor. Hike trails and camp throughout the region's great outdoors. Keserwan and Byblos have ample activity for you and your family.



### Schools

The area has quite an array of schools to choose from, dozens of international elementary, mid and high schools. Keserwan is home to Notre Dame University, while Byblos is home to New-York-State-recognized and acclaimed Lebanese American University, as well as many well established Colleges.



### Dining

Abraham River features great coastal restaurants. Rejoice in the Lebanese, European and American cuisine throughout the area. Enjoy an evening out of town in old Byblos, where numerous bars and restaurants are sealed off from road traffic. Visit the old port for a traditional experience and exquisite views.





*Established in 1971, Byblos Homes is a family owned and operated real estate development company, specialized in developing customized, high quality and affordable housing.*

*Our team is our family. We take great pride in our work, from foundation to finishing. With over 40 years of real estate experience and thousands of satisfied home owners, you can rest assured that your home is built right. Similarly to Byblos - the oldest continuously inhabited city on earth, we'd like to think your home, built right, can be continuously inhabited by you.*

*We want to Build you a Home, a Home for Life.™*

## Our Core Values

*Since its foundation, Byblos Homes has been governed by its core values. They structure the principles and elevate the standards by which we abide. They dictate how we perform and make decisions, further ensuring that we always **do what is right**. That spirit, is the foundation of our organization, transcending from father to son, manager to employee, peer to peer and builder to homeowner.*

**These values form the six pillars of Byblos Homes:**



### **Stewardship**

*To lead, respect all and care for our surroundings*



### **Innovation**

*To create, innovate and contribute better technologies*



### **Integrity**

*To be truthful, ethical and deliver on commitments*



### **Timeliness**

*To deliver in a timely manner and respect deadlines*



### **Responsibility**

*To act responsibly, accountable to our peers and clients*



### **Eco-friendliness**

*To protect the environment for future generations*





